



# LEAPIN' LEOTARDS® 2020

Welcome to our world of Dance Team



## TABLE OF CONTENTS

SCHOOL SPIRIT	field	2-3
	pep dresses	4-5
	pep tops	6-7
	fifty yard line	8-9
	show your school spirit!	10-13
	practice tops	14-17
PERFORMANCE	warm-ups	18
	hoodies & more	19
	custom artwork	20-21
	performance tops	22-24
	biketards	25
	tunics/sublimation	26
	tops/skirts	27-29
	dresses	30-31
	quick costumes	32-33
	hip hop	34
novelty "look" book	35	
BASICS	basics	36-38
	accessories	39
	shoes	40-41
	bags & poms, etc.	42
important information	43	

## OUR GOAL

### TO MAKE YOUR JOB EASIER

- By being your **ONE STOP SHOP**
- To provide you with **ALL** your needs
- If we don't have it, we **WILL** find it!
- We work with **ALL BUDGETS**

Our Sales staff is the most professional, knowledgeable & Customer service oriented in the Dance Team industry

### SERVICE

is our pledge to our clients.

- One Email • One Call • **It's that EASY!**

## COVER PHOTO

V-Back crop top w/ruched front.  
White/Silver shown. Call for price.

Full circle ankle length skirt.  
White N/L shown. Call for price.

**2A** Long sleeve ballet neck crop top. Purple sequin shown. Art extra. PA-LA \$62

**2B** Pull on field skirt. Liquid Purple w/Silver sequin shown. PA-LA Call for price.

**2C** Short. Liquid Purple shown. PA-LA \$22.50



*XL garments add \$6.*

Call for  
Fabrics & Colors.



3A

3B

3C

**3A** Fully lined snap back halter top. Fuchsia sequin shown. PA-LA \$49

**3B** Short. Berry N/L shown. PA-LA \$19.50

**3C** Pull on field skirt w/ruffle. Gold sequin w/liquid Hot Pink shown. PA-LA Call for price.



3D

3E

3F

**3D** Fully lined T neck halter w/ criss cross back. Kelly sequin w/Black velvet shown. PA-LA \$64.60

**3E** Short. Black velvet shown. PA-LA \$26

**3F** Pull on field skirt w/ruffle. Black, Gold and Kelly sequin shown. PA-LA Call for price.



# pep dresses



4A



4B

**4B** V-neck dress. Navy N/L and liquid Copper shown. PA-LA \$57.60



4C

4D

**4A** Two-tone racerback pep dress. Columbia Blue sequin w/liquid White shown. PA-LA \$69

**4C** Men's SS V-neck color block top. Royal Blue microfiber w/Gold shine on shown. SA-LA \$56

**4D** Men's cheer pant. Black microfiber shown SA-LA \$ 49

**4E** Mock wide band fully lined pep dress. Silver-White sequin w/ Purple shine on shown. PA-LA \$ 76

**4F** Fully lined V-neck halter pep dress. Royal Blue sequin w/Gold shine on shown. PA-LA \$78



4E



4F



# pep dresses



**5A** SS V-neck pep dress. Black and Red microfiber shown. PA-LA \$55



**5B** Mock T halter fully lined pep dress. Red sequin w/Red velvet trim shown. PA-LA \$79



**5C** Mock halter pep dress. Burgundy sequin w/liquid Silver shown. PA-LA \$60



**5D** SS crew neck pep dress. Black/White microfiber shown. PA-LA \$57



**5E** Wide band V-neck fully lined pep dress. Black and Red sequin w/Red shine on shown. PA-LA \$75

# pep tops

Choose Color/Fabric/Style For Your Look



**6A** Chevron halter top. Silver shine on/ Columbia Blue and Black Silkskyn shown. PA-LA \$44

**6B** V-neck color block halter top w/cut out front and back. Burgundy w/Silver sequin shown. PA-LA \$50

**6C** T-neck color block halter top w/cut out front & back. Purple w/Silver sequin shown. PA-LA \$54

**6D** V-neck top w/diagonal inset. Navy w/Silver sequin shown. PA-LA \$44

**6E** V-neck top w/back panel inset. Kelly w/Silver sequin shown. PA-LA

6

**Art extra.**  
Call for colors.



**6F** Long sleeve ballet neck crop top. Burgundy Silkskyn shown. PA-LA \$38

*XL garments add \$6.*

Choose Color/Fabric/Style For Your Look

pep tops



**7A** Cami racer top w/mesh back cut outs. Red shine on w/Nude mesh shown. \*See 15A for back. PA-LA \$42

**7B** T-neck halter top. Gold sequin w/Black Silkskyn shown. PA-LA \$44

**7C** Color block top. Red w/Black sequin shown. PA-LA \$49

**7D** Long sleeve open back crop top. Black liquid w/Teal sequin shown. PA-LA \$58

**7E** V-neck empire 3 color top. Gold/White/Black sequins shown. PA-LA \$58

**7F** T-neck empire 3 color top. Red sequin w/Black microfiber shown. PA-LA \$55

# fifty yard line



**8A** Halter neck fully lined leotard. Red sequin w/Red N/L shown. PA-LA \$56

**8B** Reversible pull on full circle skirt. Black and Red super stretch shown. PA-LA \$75

**8C** Mock T halter leotard w/ sweetheart cut-out. Navy super stretch w/Silver-White sequin shown. PA-LA \$62

**8D** Pull on full circle skirt. Navy super stretch shown. PA-LA \$48

**8E** Twist front crop top. Red N/L shown. PA-LA \$40

**8F** Ruffle skirt w/attached short. Red N/L w/liquid Silver, Red and White ruffle shown. PA-LA Call for price.

**8G** Mock neck sweetheart fully lined zip-back top. Red velvet, liquid Silver and Navy sequin shown. PA-LA \$66

**8H** Hi-waist pull-on skirt w/attached short. Red velvet w/Navy sequin shown. PA-LA \$52

**8I** Gauntlets. Red velvet w/Navy sequin shown. \$32

**8J** V-neck halter front lined field dress w/short attached. Burgundy velvet w/Silver-White sequin shown. PA-LA \$90

*XL garments add \$6.*

**Call for  
Fabrics & Colors.**



Let Us Create a Design For You

fifty yard line



**9A** Mock T leotard w/Bird-cage Back. Black velvet w/ Teal and Gold sequin shown. PA-LA Call for price.

**9B** Pull on full circle skirt. Black velvet w/Gold sequin and Teal under-layer shown. PA-LA Call for price.

**9C** Cuffs. Teal and Black sequin shown. Call for price.

**9D** SS Leo w/attached overlay. Kelly Green super stretch w/Silver sequin and White fringe shown. PA-LA

**9E** A-line pull on skirt. Kelly Green super stretch w/Silver trim shown. PA-LA

**9F** Long sleeve unitard with 3/4 skirt. Burgundy matte N/L, Burgundy mesh, Burgundy sequin w/Berry sequin and liquid shown. PA-LA Call for price.

**9G** Sweetheart halter neck top. Purple velvet w/Silver-White sequin shown. PA-LA

**9H** A-line pull on skirt w/short. Purple velvet shown. PA-LA



9I



9J



9K



9L

**9I** Velvet side slit skirt w/attached boy short. Black shown. PA-LA \$45

**9J** Sequin short. Black shown. PA-LA \$36

**9K** Sequin skirt w/side slit and attached N/L short. Black shown. PA-LA \$48

**9L** Velvet jazz pant. Black shown. PA-LA \$50



**9M** Super Flexor split-sole boot. Flexible White rubber sole with leather upper, riveted concho straps and suede lining. Star Flexor Full-sole \$65 Super Flexor Split-Sole \$70

# show your school spirit!



**10D** V-neck flowy racer back T. Fuchsia poly-cotton shown. SA-2XL \$13

**10E** Flowy muscle T. Navy Heather rayon-poly shown. SA-2XL \$13



**10A** Space dye fitness tank. Coral Poly shown. XXSA-3XLA

**10B** Muscle T. Charcoal poly-cotton shown. SA-XL \$13



**10C** V-neck racer back T. Power Pink and White poly-lightweight mesh back shown. SA-2XL



**10F** Back shown.

**10F** Drawstring neck open back muscle T. Charcoal poly-spandex and Hot Pink shown. PA-LA \$24



**10G** Shark bite flowy tank T. Flamingo shown. SA-XLA



**10H** Double cami square back bra top. Navy/White Silkskyn shown. PA-LA \$35.50

# show your school spirit!



**11A** Hooded tank. Orange poly-cotton shown. XSA-2XLA \$26.50

**11B** Sports bra. Navy microfiber shown. PA-LA \$18

**11C** Flowy muscle T w/ rolled shoulder. Heather Deep Teal poly-viscose shown. PA-LA \$13

**11D** Flowy open back T. Dark Grey Heather poly-viscose shown. PA-LA



**11E** Flowy racer back T. Dark Grey Heather poly-viscose, Mint, Black, Neon Yellow shown. XS-LA \$13



**11F** Muscle T. Orange, Pink Heather and Purple poly-linen shown. XSA-XLA \$9



**11G** Loose fit T. Purple stripe shown. SA-XLA

**11H** Scoop neck T. Lime shown. SA-XLA \$10

**11I** Racerback flowy T. Dark Grey cotton shown. SA-XLA \$10



**11J** Flowy space dye racer back top. Orange, Blue, White/Silver, Green mesh shown. Red & Black not shown. SA-2XLA



# show your school spirit!



**12A** SS V-neck T. Power Blue poly and Lime w/Graphite. XS-2XL



**12B** Sporty V-neck T. Red/White poly-cotton shown. PA-LA  
**12C** Hi waist legging. Black Interlock shown. XSA-XLA \$39.95



**12D** 3/4 sleeve ballet neck T. Charcoal Grey/Black and Grey stripe shown. SA-XLA



**12E** Jr. short sleeve V-neck football T. Dark Heather Grey/Grape shown. SA-XLA \$11 Ladies SA-2XLA \$13  
**12F** Jr. fit athletic short w/ side inset and brief. Purple/White/Black shown. SA-2XLA \$17.50



**12G** Men's Dry-Excel™ space dye T. Graphite Heather/Black shown. SA-3XL



**12H** Raglan sleeve color block jersey. Purple/Grey shown. SA-2XLA \$19



**12I** Jr. mesh football jersey. Colors: Black/White/Red/ Royal/Navy/Gold/Purple/ Dark Green/Light Pink and Maroon shown. SA-2XLA \$18.50



**12J** Ladies fit 3/4 sleeve V-neck T. Dark Heather w/Red cotton-poly shown. SA-XLA  
Jr fit 3/4 Sleeve V-neck T. Dark Heather w/ Navy cotton-poly shown. SA-XLA



**12K** Jr. athletic short w/ brief. Black/White/Red shown. Jr. XSA-XLA \$20



**12L** Pull on sweatpant. Black fleece shown. SA-XLA \$17

# show your school spirit!



**13A** Cardigan wrap. Dark Charcoal and Navy supima cotton shown.  
XSA-3XL \$36.50



**13B** Long sleeve crew neck T. Lavender, Slate athletic Heather and White cotton-poly shown.  
XSA-XLA \$20

**13C** Soft jersey T. Mint cotton shown.  
SA-XLA

**13D** Long sleeve T. Coral cotton shown.  
SA-XLA \$17

**13E** Hi waist legging. Black Silkskn shown.  
PA-XLA \$35

**13F** Hi waist Legging. Black Interlock shown.  
SA-XLA \$39.95

**13G** Flowy long sleeve V-neck T. Black poly-viscose shown.  
XSA-XLA \$16



**13H** Satin baseball jacket w/pockets. Columbia Blue nylon satin w/poly tricot lining shown.  
XSA-3XLA \$40



**13I** Long sleeve dry-fit T. Heather Burgundy shown.  
PA-XLA

**13J** V-neck raglan sleeve hooded T. Colors w/Dark Heather Grey: Azure/Cobalt Blue/Pinot/Baby Pink/Red/Cardinal/Navy/Watermelon/Grape shown.  
SA-XLA



**13K** Heather zip front hoodie. Colors: Eggplant/Light Grey/Lime/Peacock/Pink Flambe/Red/Violet. Shown in Royal/Papaya and Black. SA-XLA \$24

# practice tops



**CHOOSE YOUR COLOR**



**14A** Double strap X back top. Red w/ Slate Silkskyn shown. PA-LA \$42



**14B** Zip front crop top w/mesh back. Concord Silkskyn shown. PA-LA \$40



**14C** V-neck horizontal stripe racer back top. Teal Heather w/ Black Silkskyn and Grey Heather w/ Raspberry shown. PA-LA \$40



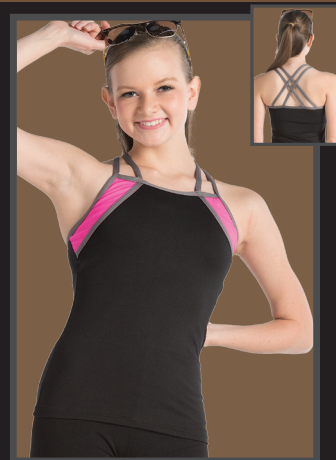
**14D** V-neck racer back top w/side insets. Black w/Turquoise Silkskyn shown. PA-LA \$40



**14E** Flowy racerback top. Teal Silkskyn shown. PA-LA



**14F** Boatneck color block top. Raspberry/Black/Mint Silkskyn shown. Black/Sea Stone/White shown. PA-LA \$40



**14G** 4 strap top. Black/Shadow Gray/Hot Pink Silkskyn shown. PA-LA \$45



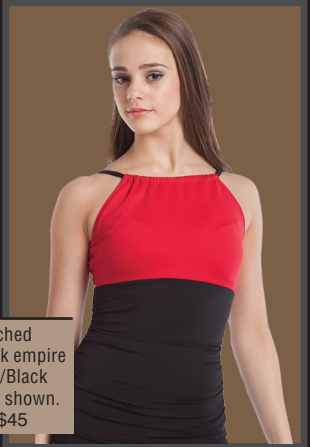
# CHOOSE YOUR COLOR

# practice tops

Silkskyn  
Plus Black,  
White, & Nude



**15A** Cami racer w/mesh back cut outs. Plum Silkskyn w/Nude Mesh shown. PA-LA \$39



**15B** Ruched high neck empire top. Red/Black Silkskyn shown. PA-LA \$45



**15C** Racer back top. Black and Red poly shown. PA-LA \$45



**15D** Flowy top. Mint to Grey poly shown. PA-LA \$45

## SUBLIMATED DESIGNS



**15E** Chevron halter top. Raspberry/Candy Pink/Black Silkskyn shown. PA-LA \$40



**15F** Color block racerback top w/open back. Teal/White/Black Silkskyn shown. PA-LA \$44



**15G** V-neck halter. Shades Of Grey poly shown. PA-LA \$45



**15H** Color block w/V back White w/Black poly shown. PA-LA \$45

## SUBLIMATED DESIGNS

- Choose your colors
- Add your team name
- Add logo for \$25 art fee

service@leapinleos.com  
1-800-460-9776  
www.leapinleos.com

**Art extra.**  
Call for colors.  
All tops can be embellished.

*XL garments add \$6.*

LEAPIN' LEOTARDS'  
**ONE STOP SHOP**

# practice tops



Micropoly Plus Black, White

**CHOOSE YOUR COLOR**



**16A** Racerback top w/mesh back inset. Athletic Charcoal Grey/ Coral N/L shown. PA-LA \$44



**16B** Empire top w/drape back and attached bra. Aquamarine N/L and Black glossy flow shown. PA-LA \$44



**16C** 6-Strap drape back top. Athletic Charcoal Grey w/Burgundy N/L shown. PA-LA \$48



**16D** V-neck flowy top w/attached bra. Metal glossy flow and Black/Crimson N/L shown. PA-LA \$48



**NEW!!**  
Under \$30

**16E** Flowy tulip back tank. Purple poly shown. PA-LA \$24

**16F** Flowy open back tank. Turquoise poly shown. PA-LA \$24

**16G** Flowy cami racer back tank. Fuchsia poly shown. PA-LA \$24.95



# practice tops

Call for Colors



**17A** Macramé racer back. Plum shown. XSA-XLA \$34



**17B** Braided back tank. Emerald shown. XSA-XLA \$29



**17C** Ladder back tank. Plum shown. XSA-XLA \$29

**17D** Cami racer top w/adjustable straps. Black nylon spandex shown. XSA-XLA \$30



**17E** Men's Purple poly-cotton muscle T. SA-2XLA



**17F** Men's Black pull on short in poly knit. SA-3XLA \$18

**17G** Racer back w/macramé neckline. Black, XSA-XLA \$33



It's A Wrap!

**17H** Racer back top. Black and Red MicroTECH shown. PA-LA



**17I** Empire racer back. Black and Charcoal MicroTECH shown. PA-LA



**17J** Twist back empire top. Black and Turquoise MicroTECH shown. PA-LA



# warm-ups



**18B** Zip Front Jacket w/pockets and thumb hole. Royal w/White poly shown. XSA-4XLA \$29

**18C** Hi waist legging. Black Silkskyn. PA-LA \$35

**18D** Hi waist legging. Black Interlock. PA-LA \$39.95

**18A** Zip front jacket w/pockets. Royal and White poly w/metallic Silver shown. PA-LA \$34



**18E** Men's zip front poly tricot jacket w/pockets. Navy/White shown. SA-3XLA \$30

**18F** Pull on poly tricot w/pockets & lower leg zippers. Navy/White shown. SA-3XLA \$29

**18G** Color block zip front jacket w/pockets. White/Navy poly shown. XSA-4XLA \$30

**18H** Contour waist legging. Navy Supplex shown. XSA-4XLA



**18I** Color block zip front jacket w/pockets. White/Green poly shown. XSA-4XLA \$30

**18J** Poly fleece pant w/pockets, draw string waist. Green shown. XSA-4XLA \$19



**18K** 2 tone zip front poly fleece jacket w/zip pockets, and thumb-holes. Black/White shown. XSA-4XLA \$30

**18L** Hi waist legging. Black Interlock. PA-XLA \$39.95



**18M** Color block fitted jacket with thumb holes. Purple/White shown. SA-2XLA



**18N** Zip front jacket with pockets. 100% poly brushed tricot. Black/White shown. SA-XLA \$35

**18O** Pull-on loose fit pant. 100% poly brushed tricot. SA-XLA \$32



**18P** Zip Front Jacket w/pockets and thumb hole. Black w/Fuchsia poly.

Black w/Purple and Black w/Turquoise. XSA-3XLA \$33

# hoodies & more



19B

**19A** 1/4 zip pull over. Purple poly-fleece shown. XSA-2XLA \$36

**19B** Hi waist legging. Black Silkskyn shown. PA-LA \$35

**19C** 1/4 zip pull over. Navy lightweight poly-knit shown. XSA-2XLA

**19D** Two-tone fleece hoodie. Purple and Charcoal Heather shown. XSA-3XLA

**19E** Hooded jersey. Granite-Royal cotton shown. XSA-XLA \$32



**19F** 2 tone zip front poly fleece warm-up jacket w/pockets. Scarlet/Black shown. PA-2XLA

**19G** Pull on hi neck crop top. Black Heather poly-cotton rayon shown. SA-XLA

**19H** Legging. Black Silkskyn shown. SA-XLA \$35

**19I** Ladies pull on hoodie. Orange, White and Graphite poly-cotton shown. SA-XLA \$30

**19J** Raw edge tunic hoodie. Charcoal Grey cotton-poly shown. SA-XLA \$24

**19K** Hi waist legging. Black Interlock shown. SA-XLA \$39.95



19G 19I

19J

19H

19K



**19L** Pull on hoodie. Red cotton-poly shown. XSA-2XLA \$18

**19M** 1/4 Zip front microfleece top. Black poly shown. XSA-2XLA \$33.50



**19N** Fitness style jacket w/zip pockets and thumbhole. Carbon Heather supplex/shown. Additional colors: Heather Grey and Black. XSA-XLA \$39



**19O** Zip front jacket w/ front pockets and contrast stitching. Grey shown. Available in Red, Black and Navy. XSA-XLA \$29



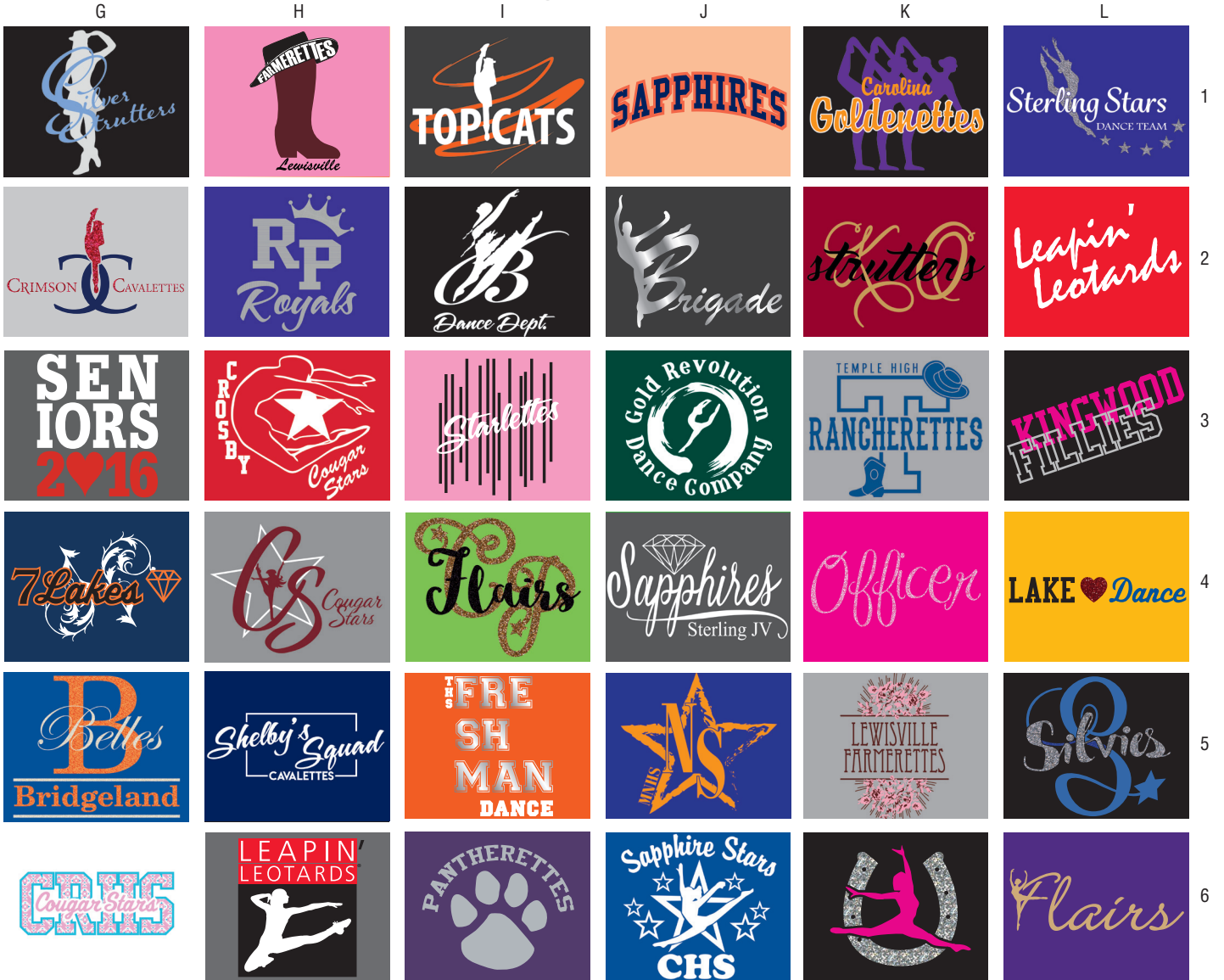
**19P** Long sleeve pull over. Navy cotton-poly shown. XSA-XLA

# custom artwork



# Choose or Create a Design

# custom artwork



# performance tops

*Choose Color/Fabric/Style For Your Look*



**22A** Zip front peplum jacket. Black lace and tulle shown. PA-LA **\$57.90**

**22B** Cami bikeretard. Charcoal N/L shown. PA-LA **\$42.50**



**22C** Sweetheart T-neck halter top w/horizontal back strap. Purple metallic Black mesh shown. PA-LA **\$76.70**



**22D** Long sleeve crop. Red sequin lace w/Black velvet shown. PA-LA **\$66.10**



**22E** Long sleeve crop w/geometric insets. Black velvet w/Black satin mesh shown. PA-LA **\$81.50**



**22F** Mock T 1/4 zip halter top. Royal holographic sequin w/Black velvet and Black mesh shown. PA-LA **\$82.10**

**22G** Mock T 1/4 zip halter crop top. Fuchsia holographic sequin w/Black mesh shown. PA-LA **\$75.60**



**22H** Halter crop top. Rose gilded velvet/Rose metallic mesh shown. PA-LA **\$70.80**

**22I** Halter crop top. Silver gilded velvet/Silver metallic mesh shown. PA-LA **\$70.80**

# performance tops

*Let Us Create a Design For You*



**23A** 3/4 Sleeve cold shoulder crop top. Liquid Red/Royal and Gold shown. PA-LA **\$75.60**



**23B** 3/4 sleeve T-neck top with open back. Forest sequin w/Forest metallic mesh shown. PA-LA **\$68.50**



**23C** T-neck halter crop top. Hot Pink/N/L w/Black lace shown. PA-LA **\$40.20**



**23D** Crop top w/ diagonal drape. Black velvet w/ Burgundy sequin mesh shown. PA-LA **\$70.80**

**23E** Hi waist short. Black velvet shown. PA-LA **\$44.90**



**23F** Empire tunic w/X back. Teal sequin w/Black shine on shown. PA-LA **\$56.70**



**23G** Faux lace corset top. Black velvet/liquid Red/Black sequin shown. PA-LA **\$74.40**



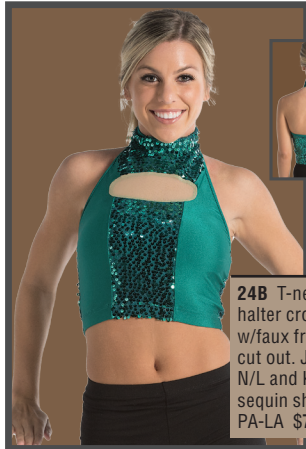
**23H** Cold shoulder open back crop top. Plum Silkskyn and lace shown. PA-LA Call for price.

# performance tops

*Choose Color/Fabric/Style For Your Look*



**24A** Sequin snap back fully lined halter top. Fuchsia sequin shown. PA-LA **\$57.90**



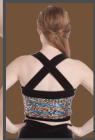
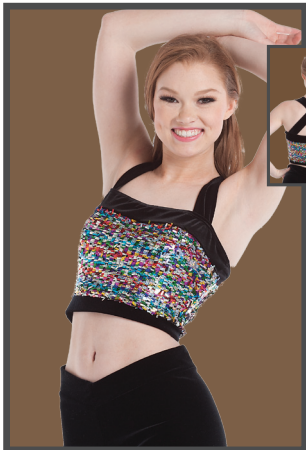
**24B** T-neck halter crop top w/faux front cut out. Jade N/L and Kelly sequin shown. PA-LA **\$70.80**



**24C** Long sleeve crop top w/open back and front zipper. Red/Black lace w/liquid Red and Black leather shown. PA-LA **\$75.60**



**24D** Long sleeve lined ballet neck crop top. Orchid sequin shown. PA-LA **\$61.40**



**24E** X back tank crop top. Black velvet/multi sequin shown. PA-LA Call for price.



**24F** Fully lined T-neck halter w/criss cross back. Red sequin and velvet shown. PA-LA **\$70.80**



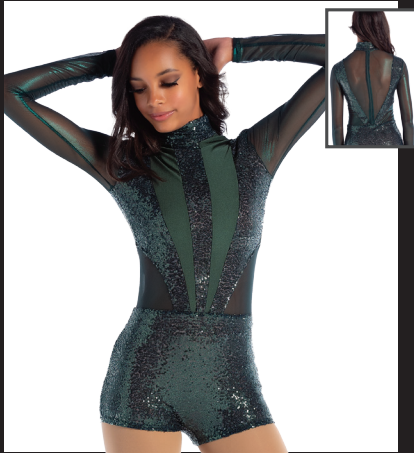
**24G** Watercolour mock T zip back crop top. Silver/Blue and Suntan/Burgundy shown. PA-XLA **\$32.50**



**24H** Short Sleeve Mock T square back Crop Top. Lavender shine on/Iris Silkskyn shown. PA-LA **\$48.50**



**25A** T-neck long sleeve biketard w/V inset. Forest sequin w/Forest metallic mesh shown. PA-LA **\$94.40**



**25B** Long sleeve open back biketard. Black matte N/L w/multi metallic mesh shown PA-LA **\$85**



**25C** Sweetheart neck biketard w/zipper back. Black matte N/L w/multi metallic mesh shown. PA-LA **\$85**



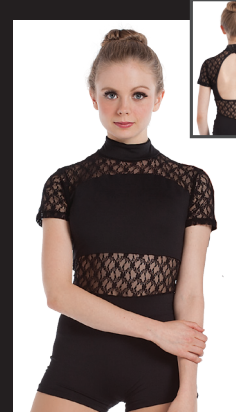
**25D** Sweetheart neck/open back biketard. Black velvet w/Turq. holographic sequin and Black mesh shown. PA-LA **\$105.10**



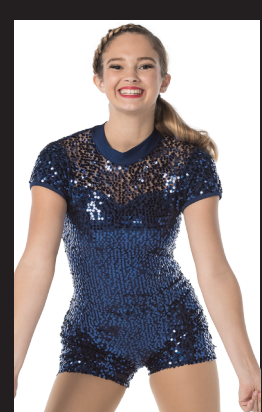
**25E** T neck long sleeve biketard w/V insets. Black matte N/L w/Black mesh and Nude N/L w/Nude mesh shown. PA-LA **\$94.40**



**25F** Sweetheart open back halter biketard. Crystal Black velvet w/Black mesh. PA-LA **\$60.80**



**25G** Short sleeve mock T biketard w/open back and lace insets. Black lace and Silkskyn shown. PA-LA **\$56.70**



**25H** Cap sleeve sweetheart T neck biketard w/open back. Navy N/L and sequin shown. PA-LA **\$85**

# tunics/sublimation

**26A** Halter Reveal dress. Berry and Metal N/L shown.

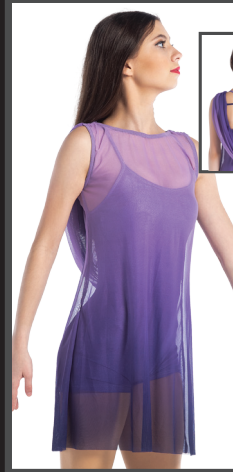
**26B** Halter Reveal dress. Metal and Berry N/L shown.

**26C** Drape back tunic. Lilac to Purple mesh shown. PA-LA \$59

**26D** Boatneck tunic. Green to Grey mesh shown. PA-LA \$59

**26E** Cami drawstring neck tunic. Coral and White poly shown.  
**26F** Cami biketard. White matte N/L shown. PA-LA \$59

## REVEAL



## SUBLIMATED

### CALL FOR PRICING



**26G** Halter handkerchief skirt dress. Yellow and Red/matte N/L shown.

**26H** Halter handkerchief skirt dress. Red and Yellow/matte N/L shown.

**26I** 3/4 sleeve low drape back tunic. Light Blue glossy flow shown. PA-LA \$59

**26J** Boatneck low V back cami biketard. Charcoal N/L shown. PA-LA \$54.30

**26K** V-neck flowy tunic. Blush mesh shown. PA-LA \$39

**26L** Cami leo. Blush Silkskyn. PA-LA \$37.80

*XL garments add \$6.*

**Call for  
Fabrics & Colors.**

# tops/skirts

CALL FOR FABRICS & COLORS



**27A** Mock T open back top. Blush Silkskyn w/Blush mesh shown. PA-LA **\$37.80**  
**27B** Two layer pull-on skirt. Blush mesh shown. PA-LA **\$70.80**  
**27C** Banded brief. Blush Silkskyn shown. PA-LA **\$24.60**

**27D** Zip crop top w/mesh Back. Burgundy Silkskyn w/Burgundy mesh shown. PA-LA **\$29.10**  
**27E** Pull-on diagonal skirt. Black poly shown. \*Short not included. PA-LA **\$50.80**  
**27F** Halter crop top. Gold sequin lace w/Black trim shown. PA-LA **\$69**  
**27G** Hi-low pull on skirt w/attached brief. Black glossy flow shown. PA-LA **\$75.60**



**27H** Long sleeve crop top. Silver lace/Silver satin shown. PA-LA **\$67.30**  
**27I** Skirt w/side slit and attached short. Charcoal N/L shown. PA-LA **\$75.60**



**27L** Mock open neck crop top. Turquoise shine on w/mesh shown. PA-LA **\$45.50**  
**27M** Diagonal pull-on skirt. Turquoise mesh shown. PA-LA **\$40.20**  
**27N** Banded brief. Turquoise Silkskyn. PA-LA **\$24.60**  
**27J** 3/4 Sleeve crop Top. Champagne sequin lace w/peach N/L. PA-LA **\$66.10**  
**27K** Long pull on w/ attached skirt. Peach N/L. PA-LA **\$80.30**

# tops/skirts

CALL FOR FABRICS & COLORS

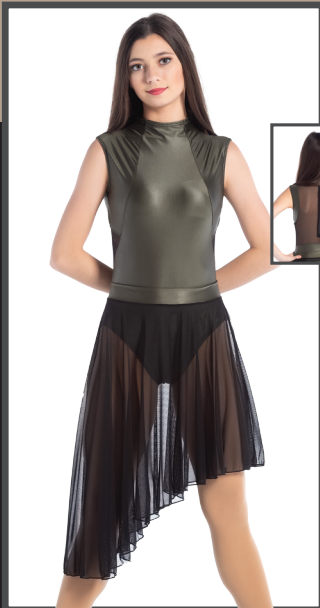


**28C** Funnel neck leotard w/mesh back. Olive satin shown.

PA-LA \$52

**28D** Diagonal mesh skirt. Black mesh shown.

PA-LA \$40



**28E** One sleeve cold shoulder open back crop top. Navy sequin lace/Navy N/L shown.

PA-LA \$66

**28F** Side slit skirt w/attached short. Navy mesh and N/L shown.

PA-LA \$73.50

**28A** 3/4 sleeve crop top. Navy Silkskyn w/ Navy mesh. PA-LA \$38.30

**28B** Navy mesh double layer skirt.

\*Short shown not included. PA-LA \$70.95



**28G** Diagonal halter top w/open midriff, ruffle paneled skirt and attached short. Navy N/L mesh and lace shown.

PA-LA \$92



**28H** Long sleeve strappy back crop top. Black N/L w/Black mesh shown.

PA-LA \$66

**28I** Long pull on open front skirt w/attached short. Black N/L w/Black mesh shown.

PA-LA \$69.95



**28J** Wide mock open neck leotard. Black lace w/Black Silkskyn shown.

PA-LA \$66

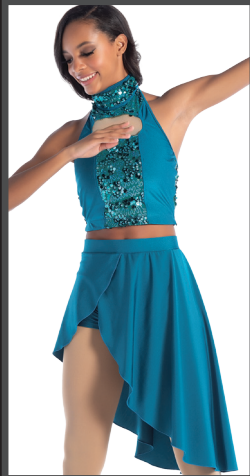
**28K** Pull-on diagonal skirt. Black lace shown.

PA-LA \$52

# tops/skirts

CALL FOR FABRICS & COLORS

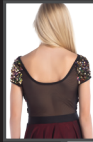
**29A** T-neck halter w/faux front cut-out. Peacock N/L w/Teal sequin mesh shown. PA-LA **\$71**



**29B** Diagonal pull-on skirt. Peacock N/L shown. PA-LA **\$71**

**29C** Hot short. Peacock N/L shown. PA-LA **\$21.95**

**29D** Cap sleeve leo w/mesh back. Gold sequin w/Black mesh shown. PA-LA **\$70**



**29E** Two layer pull-on skirt. Red poly w/Black mesh shown. PA-LA **\$51**



**29F** Cap sleeve leo w/mesh back. Black sequin w/Black mesh shown. PA-LA **\$69**

**29G** Pull-on diagonal skirt. Red poly w/Black sequin lace shown. PA-LA Call for price.



**29H** V-back crop top. Charcoal N/L w/Plum mesh shown. PA-LA **\$44.95**



**29I** Skirt w/side slit and attached short. Charcoal N/L shown. PA-LA **\$79**

**29J** Long sleeve criss cross back bikini top. Black lace over Ivory N/L. PA-LA **\$85**

**29K** Black mesh cascade skirt. PA-LA **\$29**



**29L** Mock SS square back crop top. Mocha Silkskyn w/ Mocha mesh shown. PA-LA **\$43**

**29M** Open panel pant w/short. Mocha Silkskyn w/Mocha mesh shown. PA-LA **\$71.95**

# dresses

Choose Color/Fabric/Style For Your Look



**30A** T-neck a-line dress w/vertical inset. Plum matte N/L w/metallic Grey, vertical inset metallic matte. PA-LA \$80



**30B** X back empire dress w/attached bike short. Copper gilded velvet w/liquid Copper trim shown. PA-LA \$99



**30C** One sleeve open back dress w/attached short. Black Silkskyn w/Moss Green Sublimated mesh skirt. PA-LA \$99



**30D** Diagonal 3/4 sleeve dress w/attached brief. Lilac mesh shown. PA-LA \$97



**30E** Convertible ankle-length dress. Red N/L shown. PA-LA Call for price.



**30F** Sweetheart neck line w/low open back w/attached short. Black velvet w/Black mesh shown. PA-LA \$103.95



**30G** One sleeve sweetheart neck w/cascade skirt. Dusty Rose velvet w/Dusty Rose satin mesh shown. PA-LA \$105

## Let Us Create a Design For You

**31A** Flowy top. Kelly sequin mesh w/Jade N/L trim shown. PA-LA **\$72**

**31B** Racerback bra top. Navy N/L shown. PA-LA **\$29**

**31C** Short. Navy N/L shown. PA-LA **\$22**

**31D** One shoulder long sleeve dress. Kelly sequin mesh w/clear strap. PA-LA **\$85**

**31E** One shoulder biketard w/clear strap. Jade N/L shown. PA-LA **\$43**



**31F** Sequin T neck open back mini dress fully lined. Burgundy shown. PA-LA **\$109**

**31G** Hot short. Burgundy N/L shown. PA-LA **\$22**



**31H** T-neck drape front dress w/ diagonal skirt and attached short. Royal sequin lace w/Royal Blue N/L shown. PA-LA **\$100**

**31I** Fully lined T neck halter dress w/ low back. Hot Pink sequin lace w/liquid Hot Pink shown. PA-LA **\$97**

**31J** Short halter front-lined dress w/ attached bike short. Teal sequin lace w/Teal mesh skirt shown. PA-LA **\$97**



### WATER COLOUR



**31K** Asymmetrical dress. White/Emerald shown. PA-XLA **\$60.95**



**31L** Lace cap sleeve dress. Navy/Forest/Rust shown. PA-XLA **\$50.95**

Call for colors.



**31M** Long sleeve hi-lo dress. White/Purple/Teal shown. PA-XLA **\$67.95**



**31N** Hi-lo halter dress. White/Emerald shown. PA-XLA **\$51.75**

# quick costumes

## Mix & Match

**32A** Sweetheart mesh open back leo. Crystal Black velvet w/Black mesh shown. PA-LA \$53

**32B** Asymmetrical pull on skirt. Black mesh w/ Crystal Black velvet waistband. PA-LA \$40

32A/B



32C



**32C** Army Green shiny tricot w/ Black mesh. PA-LA \$44.95



32D



**32D** Sweetheart zip back crop top. Burgundy sequins w/ Burgundy mesh. PA-LA \$52



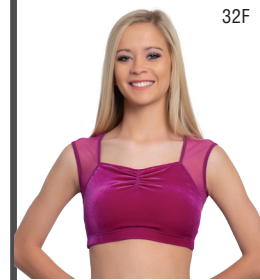
32E



**32E** One shoulder diagonal neckline crop top. Crystal Lavender velvet w/Violette mesh shown. PA-LA \$48

**32F** Pinch front square neck crop top. Magenta velvet w/Raspberry mesh. PA-LA \$37

**32G** Aqua sequins w/Turquoise mesh. PA-LA \$44



32F



32G



32H



32I

**32H** Drape overlay skirt. Violet mesh w/Crystal Lavender velvet. PA-LA \$52

**32I** Asymmetrical skirt. Turquoise mesh w/Turquoise Silkskyn waistband. PA-LA \$40

**CHOOSE FROM:**  
 • SEQUIN MESH  
 • SHINE ON  
 • SILKSKYN  
**TO CREATE YOUR UNIQUE LOOK**

Call for colors.

*XL garments add \$6.*



# quick costumes



**33A** Wavy mesh dress w/asymmetrical skirt and sweetheart inset. Deep Teal shown. XSA-XLA



**33B** Mock T-neck open back dress. Burgundy shown. XSA-XLA



**33C** Power mesh velvet dress w/ side slits. Navy shown. XSA-XLA



**33D** Flowy twinkie mesh tunic. Royal shown. XSA-2XLA



**33E** Open back sweetheart neckline leo. Twinkle mesh yoke and back. Royal shown. XSA-2XLA



**33F** Twinkle chiffon flowy open skirt-side or front. Royal shown. XSA-2XLA



**33G** Mock neck open back leo w/ twinkie power mesh yolks. XSA-2XLA

**33H** Twinkle chiffon flowy open skirt-side or front. Nude shown. XSA-2XLA

# hip hop



**34A** Zip front hooded biketard w/ shoulder and hip pads. Black leather and Silkskyn shown. PA-LA \$92



**34B** Zip front crop vest. Black leather shown. PA-LA \$53

**34C** Hi waist legging w/front seams. Black leather shown. PA-LA \$50



**34D** Zip front hoodie. Liquid Royal w/Black matte N/L shown. PA-LA \$69

**34E** Jogger pant w/pockets. Black poly/spandex shown. PA-LA \$24



**34F** Men's hooded zip front jacket. Black quilt w/ White N/L shown. PA-LA Call for price.

**34G** Men's jogger pant. Black lightweight fleece shown. SA-3XL \$30

**34H** Crop pull on hoodie. Black and White N/L shown. PA-LA \$51

**34I** Hi waist legging w/ front and back seams. Black Silkskyn shown. PA-LA \$51

**34J** Long sleeve mock T top w/sequin back and insets on sleeve. Red/Silver sequin/ Black leather. PA-LA \$77.90



**34K** Shark bite flowy tank T. Flamingo shown. PA-LA \$14

**34L** Contour waist multi space dye leggings. PA-LA \$44.90

**34M** Hooded crop top. Red Silkskyn w/ liquid Gold shown. PA-LA \$53

**34N** Distressed jean legging. Denim Blue shown. Also available in Denim Black. One Size \$34

Let Your Imagination *Go Wild!* novelty "look" book

35A



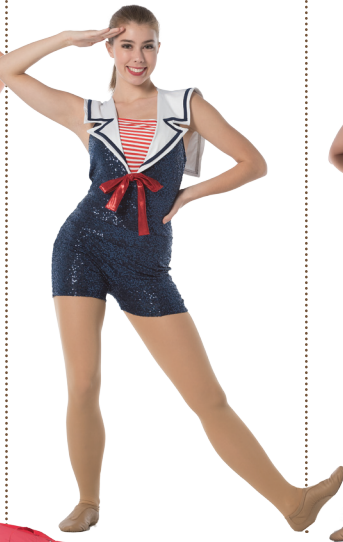
35B



35C



35D



35E



35F



35G



35H



35I



35J



35K



35L



and more...

# basics



**36A** Halter Top.  
Ultraviolet Silkskyn shown.  
PA-LA **\$28.80**



**36B** Tank top.  
Black Silkskyn shown.  
PA-LA **\$30.60**



**36C** Cami top.  
Red Silkskyn shown.  
PA-LA **\$30.60**



**36D** Racerback top.  
Royal Blue Silkskyn shown.  
PA-LA **\$28.80**



**36E** Cami racerback top.  
Raspberry Silkskyn shown.  
PA-LA **\$30.60**



**36F** Leapin' Leotards®  
Wrap. Black Cotton lycra.  
P, S/M, L/ **\$33.30**



**36G** High waist brief.  
Black N/L shown.  
PA-LA **\*DISCONTINUED\***



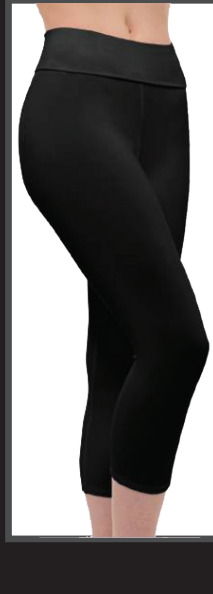
**36H** V-front short.  
Black Silkskyn shown.  
PA-LA **\$23.40**



**36I** Flat waist hot short.  
Black Silkskyn shown.  
PA-LA **\$21.60**



**36J** High waist short.  
Black Silkskyn shown.  
PA-LA **\$26.55**



**36K** High waist capri.  
PA-LA **\$36**



**36L** Side slit skirt w/  
attached boy short.  
Black SilkSkyn shown.  
PA-LA **\$42**



**37A** Cami biketard.  
Black Silkskyn shown.  
PA-LA \$42



**37B** Cami V back leotard.  
Black Silkskyn shown.  
PA-LA \$35.10



**37C** Boatneck leotard.  
Black Silkskyn shown.  
PA-LA \$33.30

**NEW** wide band  
cami racer  
sports bras  
w/dance flex  
padding.



37D



37E

**37D** Cami racer back. Black shown.  
**37E** Racer back. Black microfiber  
PA-LA \$27



**37F** Halter bra. Mocha and Nude  
Silkskyn shown. PA-LA \$25.20



**37G** V back cami bra. Black  
Silkskyn shown. PA-LA \$24.75



**37H** Cami racer bra. Black Silk-  
skyn shown. PA-LA \$24.75



**37I** Cami bra. Black Silkskyn  
shown. PA-LA \$24.30



**37J** Racer back sports bra.  
Black Silkskyn shown.  
PA-LA \$21.60

**NEW**

Interlock  
double knit fabric  
giving complete  
coverage in leggings  
pants and shorts.



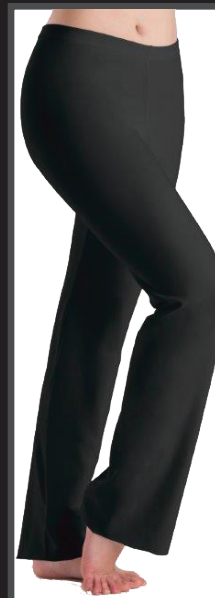
**37K** High waist legging.  
Black Silkskyn shown.  
PA-LA \$35  
Black Interlock \$39.95



**37L** Contour waist legging.  
Black shown.  
PA-LA \$38.70



**37M** Drawstring jogger.  
Black Heather poly  
cotton blend shown.  
PA-LA \$16



**37N** Jazz pant. Black  
Silkskyn shown.  
PA-LA \$39.95

# basics DISCOUNT



**38A** Cami top.  
Red microfiber shown.  
PA-LA **\$25.20**



**38B** Halter top.  
Lime microfiber shown.  
PA-LA **\$23.40**



**38C** Racer back tank top.  
Royal Blue microfiber shown.  
PA-LA **\$23.40**



**38D** Tank top.  
Neon Pink microfiber shown.  
PA-LA **\$27**



**38E** Boatneck leotard.  
Black microfiber shown.  
PA-LA **\$30.60**

## SPORTS BRAS



**38K** Racerback sports bra.



**38L** Cami bra.



**38M** Cami racer bra.  
Black microfiber shown.  
PA-LA **\$18.90**



**38F** V-waist short.  
Black microfiber shown.  
PA-LA **\$20.70**



**38G** Capri.  
Black ProWear shown.  
PA-LA **\$23.85**



**38H** Ankle legging.  
Black ProWear shown.  
PA-LA **\$26.55**



**38I** Drawstring jogger.  
Black Heather poly cotton blend shown.  
SA-LA **\$17**



**38J** Jazz pant.  
Black microfiber shown.  
PA-LA **\$39.60**

# accessories

**39A** Underwire padded bra w/front opening and clear straps. Nude only. 32 B-D, 34-40 B-DD **\$30.40**  
Clear adjustable shoulder straps **\$4.80** pair  
Clear adjustable back straps S,M,L,XL **\$4**



**39B** Boy cut short. MicroTech PA-LA **\$11.20**



**39C** Cheer brief. MicroTech PA-LA **\$9**  
Call for colors.

**39D** Seat cushion. 100 minimum. **Call for pricing.**



**38E** Economy vinyl full length raincoat w/ pockets, hood and vents. Full front snap closure. Clear only. S-XL **\$15**



**39F** 25oz. Stainless steel water bottle. Stays cold for 12 hours. 5 colors. Art - one color one placement \$49 set up fee  
Min 12 - \$30  
25 - \$23



**39G** Low back cami body liner leo w/adjustable clear straps. Nude and Dark Nude. XSA-2XL **\$29.85**



**39H** Cami low back body stocking w/convertible foot and clear straps. Colors: Jazzy Tan/Mocha/Dark Nude/Cappucino/Suntan. P, S/M, L/XL **\$19.60**  
\*Plus sizes call for price.



**39I** Clear back, adjustable strap padded bra. Straps adjust to halter/criss cross or cami. Mocha shown. Colors: Nude/Dark Nude. PA-LA **\$26.80**



Clear adjustable shoulder straps **\$4.80** pair  
Clear adjustable back straps S,M,L,XL **\$3.20**

**39J** TuTu's. Colors: Hot Pink/Lime Green/Pink/Violette. **\*DISCONTINUED\***



**39K** Nylon gloves. **\*DISCONTINUED\***



**39L** "Total Stretch" soft, supplex® lycra® tights. \*Footed **\$12.80**  
\*Convertible **\$14.60**  
\*Stirrup **\$13.80**  
\*Footless **\$13**  
Jazzy Tan/Lt. Suntan/Dark Nude/Cappucino/Mocha/Black. S/M, L/XL, Tall  
\*Plus sizes-call for price.



**39M** Low cut padded clear back bra w/adjustable clear straps. Nude shown. Colors: Nude/Dark Nude/Mocha. PA-LA **\$28**



Clear adjustable shoulder straps **\$4.80** pair  
Clear adjustable back straps S,M,L,XL **\$3.20**

**39N** Flexible rhinestone ponytail holder.



**39O** Rhinestone Choker. **\$21.60**

**39P** Full eye lashes with glue. Black shown. **\$5**

**39Q** 100% poly 1x1 rib team sox. Intermediate **\$24.50**  
Adult **\$34.95**  
Call for colors.



**39R** Stadium blanket. 50" w x 60" h poly cotton. 18 colors. Call for colors. Art extra. **\$19**



**39S** Full foot soft Fishnet tights. **Seamless \$15.80**  
Black/Jazzy Tan/Suntan/Toast. **Seamed \$16.20** Black. **Professional wt. \$27.90**  
Black/Suntan/Toast. S/M, L/XL



**39T** Clear back bra w/ clear adjustable straps. Colors: Nude/Mocha Silkskyn. PA-LA **\$32**



**35U** Small rhinestone earrings (post or clip-on). Crystal only. **\$10.50**



**35V** Large rhinestone earrings (post or clip-on). AB shown. Crystal available. **\$12.50**

**39W** Make-up kit. Choose your own colors and items:  
-Eye shadows  
-Blush  
-Lipstick  
Call for pricing.



# shoes

*Pastry*  
AMERICA'S #1 DANCE SNEAKER

\* Call for special team pricing.



**40A Glam Pie Glitter Hip Hop Sneaker.** Leather upper with perforated vamps, 2 sets of shoe laces, padded collar and non-marking soles. Colors: Silver/Gold/Navy/Black w/White sole/Black w/Black sole and Red shown. Adult sizes: 5-8.5 w/half sizes 9-13 whole size. **\$65\***



**40B Studio Trainer Sneaker.** Flexible, light weight breathable 4 way stretch spin pad for easy turning. Colors: Black w/Black sole and Black w/White sole. Adult sizes: 5-8.5 w/half sizes 9-13 whole size. **\$65\***



**40C Cassatta Canvas Hi Top Sneaker.** Stretch canvas sneaker, memory foam footbed, light weight flexible construction, spin spot and leather flocked outsole and non-marking soles. Colors: Pink, Black/White, Black/Red. Adult sizes: 5-8.5 w/half sizes 9-13 whole sizes. **\$55\***



**40D Pop Tart Glitter Hip Hop Sneaker.** Memory foam footbed, rubber and striped leather outsole, padded collar and non-marking soles. Colors: White/Black/Blue/Red/Silver/Gold/Pink shown. Adult sizes: 5-8.5 w/half sizes 9-13 whole size. **\$55\***



**40E Ultimate Hip Hop Sneaker.** Light weight, breathable 4 way stretch mesh & rubber outsole spin pad for easy turning. Colors: Black w/White sole. Adult sizes: 5-8.5 w/half sizes 9-13 whole size. **\$70\***



**40F Recovery Slide.** Light weight w/contour footbed. Blank strap to customize. Colors: Black w/Black sole. Adult sizes: M-5/6, L-7/8, XL-9/10, XXL-11/12 **\$30\***



**40G High Top Sequin Sneakers.** Sequin upper, padded insole and rubber outsole. Sizes: Adult 5.5-11. Colors: Black and Silver **\$39**



**36H Dance Paws®** Slip-on protection for the barefoot dancer. Colors: Light Nude/Dark Nude Sizes: XSA-XLA **\$30**



**40I Foot Undeez®** Size Chart  
Four way stretch nylon P (4-5)  
mesh upper with S (6-7)  
stretch suede sole. M (8-9)  
Sizes: P-XXL L (10-11)  
Colors: Black/Espresso/ XL (12-13)  
Light Suntan/Nude XXL (14-15)  
**\$26.50**



**40J Pleated 1/2 Sole**  
1/2 sole canvas "lyrical/modern"  
shoe. Machine washable canvas.  
Sizes: 3-10 Whole sizes only.  
Color: Jazzy Tan only.  
Fit: Comfort: 2 sizes smaller than  
street shoe. Snug: 3 sizes smaller  
than street shoe.  
**Canvas \$19.80**  
**Leather \$23.85**



**40K Neoprene 1/2 sole shoe.**  
Fits: Street shoe size.  
Plain **\$15.50**  
Colors: Black/Tan/Dark Tan  
Size Chart  
S (2 1/2-5)  
M (5 1/2-8)  
L (8 1/2-12)



**40L Character Shoe**  
Man made leather upper.  
1 1/2" heel.  
Sizes: Adult 4-12.  
(M & W width)  
Fit: 1/2 size larger than  
street shoe.  
Colors: Black/Caramel  
**\$47**



**40M Super Flexor Split-Sole Boot**  
Flexible White rubber split  
sole with leather upper,  
riveted concho straps and  
suede lining.  
Sizes: 4-11 w/half sizes, 12  
**\$70**

**40N Star Flexor Full-Sole**  
Sizes: 4-10 w/half sizes  
Whole sizes: 11,12,13,14 **\$65**



**40O Go Go Flexor Dance Boot**  
Flexor rubber sole for  
flexibility. Snug fit  
around leg.  
Sizes: 5-12 w/whole  
sizes only.  
Colors: Black/White  
**\$55**



**40P Y Strap 1/2 Sole Lyrical, Modern Shoe**  
4 way stretch cotton/  
spandex.  
Sizes: 3-11 whole sizes.  
Fit: 2-3 sizes down from  
street shoe size.  
Colors: Jazzy Tan/  
Cappucino.  
**\$19.50**



**41A Spin II.** Stretch Canvas Contemporary and Modern Shoe w/Elastic Back Strap.  
 Sizes: XS-L  
 XS (4-11), S (6½-8½), L (11-12)  
 Medium width.  
 Color: Flesh(Tan)  
**\$19.55**



**41B Spark**  
 Split sole soft leather jazz shoe. Neoprene mid section. Hugs arch. Low profile heel.  
 Sizes: 4-11½  
 Color: Black/Tan  
**\$38.75**



**41C Phantom**  
 Stretch canvas w/ suede and rubber split sole.  
 Sizes: 4-11½  
 Fit: Street shoe size.  
 Colors: Black/Tan  
**\$35.28**



**41D Troupe Sneaker**  
 Split sole, arch support, cushioned heel, spin spot design, lightweight and breathable dance sneaker.  
 Sizes: Adult 4-14.  
 Fit: Street shoe size.  
 Colors: Black/White



**41E Trinity**  
 Lightweight split sole dance sneaker. Leather upper.  
 Sizes: 4-14  
 Fit: 1 size larger than street shoe size.  
 Colors: Black/White



**41F Omnia Lifestyle**  
 Lightweight breathable knit upper w/sport shoe styling.  
 Sizes: 5-12  
 Fit: Street shoe  
 All colors shown.  
**\$55.25**



**41G Blochsox**  
 For contemporary dance training. Lycra spandex for compress-spin spot/control lines/enhanced arch.  
 Sizes: S (4-6), M (6-8), L (8-10), XL (10-12)  
 Colors: Sand/Charcoal/Black/Navy.  
**\$19.80**



**41H Elasta Bootie**  
 Split sole jazz shoe. Rubber forefoot pad & heel.  
 Sizes: Adult 4-11½  
 (N/M, M/W widths)  
 Fit: Street shoe size.  
 Colors: Black/Tan  
**\$51.43**



**41I Super Jazz**  
 Slip-on rubber split sole jazz shoe. Soft leather upper with wide elastic inset.  
 Sizes: Adult 4-11½ (M width)  
 Fit: Street shoe size.  
 Colors: Black/Tan  
**\$36.55**



**41J Economy Jazz shoe**  
 Slip-on rubber split sole. Leather upper with elastic side insert.  
 Sizes: 4-11½  
 Fit: Street shoe size.  
 Colors: Black/Tan  
**\$32.73**



**41K Neo-Flex Jazz shoe** with "satin neo" arch. Soft leather upper with split rubber sole.  
 Sizes: Adult 4-11½ (M width)  
 Fit: Street shoe size.  
 Colors: Black/Tan  
**\$38.25**



**41L Multi-Function Bootie**  
 Takes you from street to practice wide opening. Moulded outsole is flexible and wearable indoors.  
 Sizes: S-XL  
 S (4-6), M (6-8), L (8-10), XL (10-12)  
 Colors: Black



## Models

**Front Cover: Grace Quarterman  
 Reagan Breau, Ellie Breaux, Karson Chachere, Niya Cote,  
 Baija Dorough, Avery Foust, Manon Giot, Max Helman, Ally Hwu  
 Rylie Knight, Karlye Little, Bailey Peschel, Bella Woernley**

# bags



**42A** Glitter Backpack. Front pocket w/interior shoe and personal pockets. Two mesh side pockets. 12"W x 18½"H x 7"D \$35



**42B** Backpack. Two zippered side pockets. Padded shoulder straps. Orange/Black/White shown. 18"W x 17"H x 9"D \$27.30



**42C** Tri-Color Backpack. Inside zipper pocket. Padded back for support. 12"W x 16 ½"H x 7"D \$24.95



**42D** Gear Bag. Detachable shoulder straps. Zip end pockets and front pocket. 20"W x 10"H x 10"D \$28.60



**42E** Drawstring Backpack w/front mesh pocket. Columbia Blue w/Black. 28"W x 14"H



**42F** Glitter Duffel Bag. Vented shoe pocket. Side mesh pocket. Detachable shoulder strap. 19"W x 12¾"H x 11"D



**42G** Tri Color Duffel Bag. Front zip pocket. Detachable shoulder strap. 21"W x 11"H x 12"D



**42H** Garment bag. Denier polyester. Call for available colors. Call for price.



**42I** Clear Tote. 100% clear PVC. 12"W x 12"H x 6"D

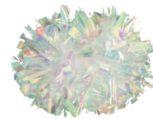
**42J** Clear Backpack. Front zip pocket. Inside cell phone holder. 2 mesh inside pockets. 11 ½"W x 17"H x 5 ½"D



**42K** Shoulder Tote Bag w/zipper. Navy shown. Call for available colors. 20"W x 15"H x 5"D

# poms

All poms available 4-6". Call for colors & fabrics.



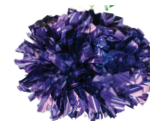
**42L** 1" x 4" pom w/baton handle. Iridescent shown. \$16 each



**42M** ¾" x 4" pom w/baton handle. Navy/Teal metallic shown. \$16 each



**42N** ¾" x 4" pom w/baton handle. Silver metallic and crystal Purple/Burgundy metallic and crystal Silver shown. \$19.50 each



**42O** 1" x 5" pom w/baton handle. Purple and Lime metallic shown. Purple metallic \$16 each



**42P** 5" Metallic 2 color pom. Call for available colors. Holographic Purple/Silver shown. \$18.75 each



**42Q** 5" Plastic pom. Pink shown. \$9.65 each

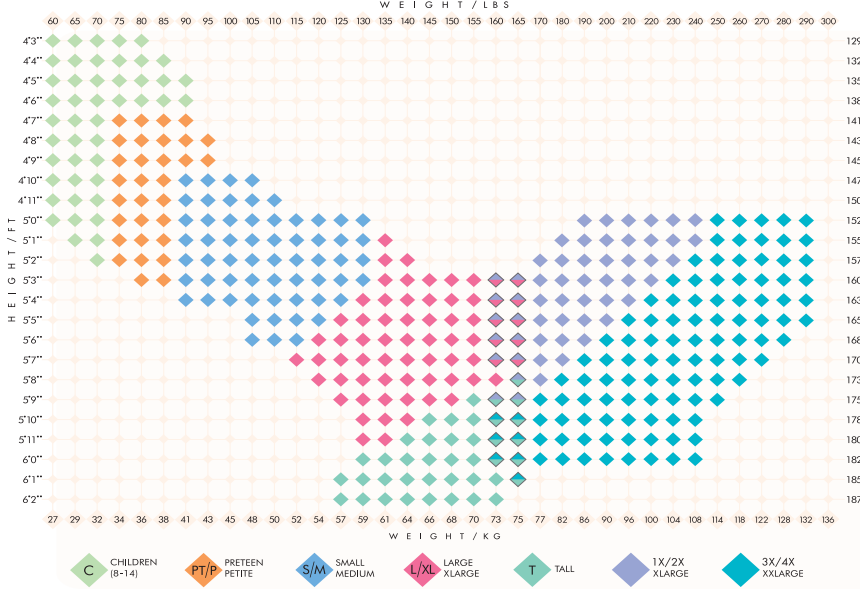


**42R** 4" Metallic 3 color pom. Royal/Lt. Blue/Silver shown. \$17.25 each

**POM KEY**  
Solid Lazer - \$26.30 each  
Solid Holographic - \$18.55 each  
Solid Metallic - \$14 each  
Solid Plastic - \$7.65 each

# important information

## SIZING CHARTS Tights/Bodystockings



### SHIPPING

#### GROUND SHIPPING CHARGES

Minimum Charge \$12

Shipping charges are based on current UPS shipping rates.

Poms, Hats, Shoes and Boots are subject to additional charges due to weight and oversized packages.

#### EXPEDITED SHIPPING CHARGES

• Expedited shipping charges are available. Call for charges.

### DANCEWEAR SIZE CHART

Size	Bust	Waist	Hips	Girth
Petite Adult	30 - 32	23 - 25	31 - 34	51 - 54
Small Adult	30 - 33	23 - 26	33 - 35	54 - 57
Medium Adult	34 - 37	25 - 28	35 - 38	57 - 60
Large Adult	37 - 41	28 - 32	38 - 42	61 - 64
X-Large Adult	41 - 43	32 - 35	42 - 45	64 - 67

Plus Sizes – please inquire about availability and pricing.

### We Represent the Following Major Companies

Augusta	Capezio	Funky Diva	Pastry	Watercolour
BalTogs	Champion	Gotta Flurt	Pennant	Yofi
Black & Pink	Charles River	Happy Feet	Peppo	and many more
Bloch	Dance Paws	High Five	Soffe	
Body Wrappers	Danshuz	Holloway	Tonix	
Boxercraft	Eurotard	Motionwear	UFO	

### OUR GOAL: TO MAKE YOUR JOB EASIER

- By being your **ONE STOP SHOP** for your Dance Team
  - To provide you with **ALL** your needs for your Team • If we don't have it, we **WILL** find it! • We work with **ALL BUDGETS**
- Our Sales staff is the most professional, knowledgeable & Customer service oriented in the Dance Team industry
- SERVICE • SERVICE • SERVICE** is our pledge to our clients.
- One Email • One Call
  - It's that **EASY!**

### ORDER

1. **Choose item(s)** - write down number(s) listed and description from page.
2. **Choose fabric & color** - list color name and fabric.
3. **Choose sizes** - see sizing charts for most accurate sizing. If in question, please go up one size.

### ORDER:

1. **Website** [www.leapinleos.com](http://www.leapinleos.com) - Basics only
2. **Email order** [service@leapinleos.com](mailto:service@leapinleos.com)
3. **Fax order** to (713)661-1018, 24/7
4. **Call Toll Free** 1-800-460-9776, Monday - Friday 9am to 5pm CST. In Houston 713-432-0202
5. **Provide** the date you need your order.

### IMPORTANT

1. **Color Swatches/Samples:** Are available upon request. Please specify fabric type, i.e. Velvet, Nylon Lycra, Silkskyn, etc. Samples are available with credit card payment. If returned within 2 weeks, account will be credited. Fabrics and colors are subject to change.
2. **Cancellations:** No order can be cancelled or changed once it is being manufactured or has been shipped.
3. **Returns:**
  - A. Briefs, body stockings, hot shorts, tights, earrings and dancewear with attached briefs cannot be returned due to health laws.
  - B. Custom garments cannot be returned.
  - C. Monogrammed items cannot be returned.
  - D. Shoes must be in re-stockable condition (unworn) and in **original unmarked** box.
  - E. Claims for defective merchandise must be made in writing within 10 days of receipt of merchandise. Leapin' Leotards reserves the right to inspect merchandise to determine whether replacement or repair is due.
  - F. Returns, other than for defects, will be subject to a **15%** re-stocking fee.
4. **Prices:** All prices are subject to change without notice.
5. **Delivery:** Please allow 4 - 6 weeks for delivery. Allow additional two weeks for monogramming.
6. **Orders less than \$100:** Are subject to a \$20 handling charge.
7. **Minimums:** Less than 6 pieces per style per color - add \$10 per garment.
- \* 8. **Custom Orders:** Please allow approx. 8-10 weeks for delivery. Rush orders may require a surcharge of \$3.00 - \$5.00 per garment plus Air Freight.

### PAYMENT

1. **Orders require 50% Deposit** unless accompanied by an official school Purchase Order. Certified check, money order, school check, VISA, MasterCard or American Express may be used. The balance due will be invoiced net 30 days upon receipt of merchandise.\*
2. **Official Public School Purchase Order** must list all items: Quantity, sizes and color along with the total amount due, including shipping and handling charges. You will be invoiced net 30 days when merchandise is shipped.\*
  - \* Invoices unpaid for more than 30 days will be subject to a finance charge at the maximum rate permitted by the law of the purchaser's state.
3. **VISA, MasterCard or American Express** may be used for payment. Include credit card number, expiration date, SCC code, name as it appears on the card, along with signature and phone number. All credit charges add 3%.
4. **Orders from individuals and non-school** supported organizations must be **pre-paid in full**.
5. **Sales Tax** - Texas customers must add sales tax. Tax exempt status is based on the state requirements to which the merchandise is shipped. A tax exempt form must be faxed or mailed with order.

LEAPIN' LEOTARDS'

**ONE STOP SHOP**

43



## Dance/Drill Team Pep Squad Color Guard

LEAPIN' LEOTARDS, Ltd.  
5320 Gulfton, Suite 1  
Houston, Texas 77081  
713-432-0202  
Fax: 713-661-1018  
1-800-460-9776  
service@leapinleos.com

Visit our website at  
www.leapinleos.com



## YEARLY CHECK-LIST

### FOOTBALL

- \_ Custom Field Uniforms
- Pep Rally
- \_ Boots
- \_ Hats/Hat Covers
- \_ Earrings
- \_ Warm-ups
- Hoodies
- \_ Rain Wear
- \_ Team Make-up
- \_ Duffle Bags/Hanging Bags
- \_ Poms
- \_ Clear Back Bras

### CONTEST

- \_ Custom/Non-Custom Costumes
- \_ Team Make-up
- \_ Hair Accessories
- \_ Earrings
- \_ Performance Accessories
  - Tights/Body Stockings
  - Clear Back Bras
- \_ Awards Attire
- \_ Hanging Bags
- \_ Lyrical/Jazz Shoes

### SUMMER/PRACTICE

- \_ Custom Embellished Team Items
- \_ Practice Tops/Hoodies/ 1/4 Zip
- \_ Leggings
- Sports Bras
- \_ Hot Shorts
- \_ Lyrical Shoes/Jazz Shoes/Sneakers
- \_ Dance Tops
- \_ Back Packs/Duffle Bags
- \_ Tights/Body Stockings/Clear Back Bras

### YEAR-ROUND ESSENTIALS

- \_ Tights/Body Stockings
- \_ Half Soles/Lyrical Shoes
- \_ Jazz Shoes
- \_ Earrings
- \_ Team Make-up
- \_ Custom Team T's/Spirit Wear
- \_ Bras

LEAPIN' LEOTARDS'

**ONE STOP SHOP**

